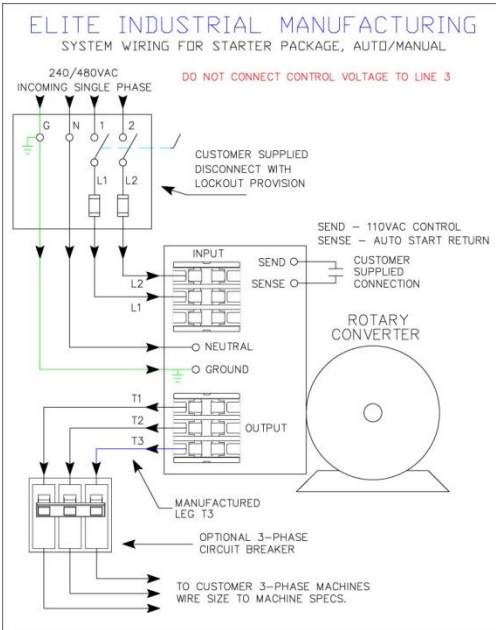




ELITE INDUSTRIAL MFG. LLC
TOLL FREE: 1-877-706-3830



***DISCONNECT SWITCH & FUSE SELECTION CHART
FOR CONVERTERS EQUIPPED WITH “SA” PACKAGES***

240VAC

480VAC

MODEL	MAX START HP	TOTAL RUN HP	CONVERTER DISCONNECT	FUSE	CONVERTER DISCONNECT	FUSE
M,P010	5	10	60	60	30	30
M,P015	7.5	15	100	75	60	40
M,P020	10	20	100	100	60	60
M,P030	15	30	200	150	100	75
M,P040	20	40	200	200	100	100
M,P050	25	50	400	250	200	125
M,P060	30	60	NA	NA	200	150
M,P075	40	70	NA	NA	200	175
M,P100	50	90	NA	NA	400	250
M,P125	60	100	NA	NA	400	300

NOTES:

The above chart should be used for all converters equipped with the “SA” package. This information will help you determine the service disconnect and the appropriate fuse size to supply adequate protection for the phase converter.

Sizes above are based upon the converters total running potential, not actual running load. This table does not replace or supersede any requirements of local, state, or national electric codes. Use only dual element time delay fuses to protect the phase converter. Do not connect any control loads to T3. No load output voltage on T2 to T3 will exceed lines L1 and L2 by 12-15%. Voltages will be reduced when load is applied. National Electric Code (NEC) requires single phase cable and branch circuit to be rated for 250% of three phase load current. Consult factory for additional information.